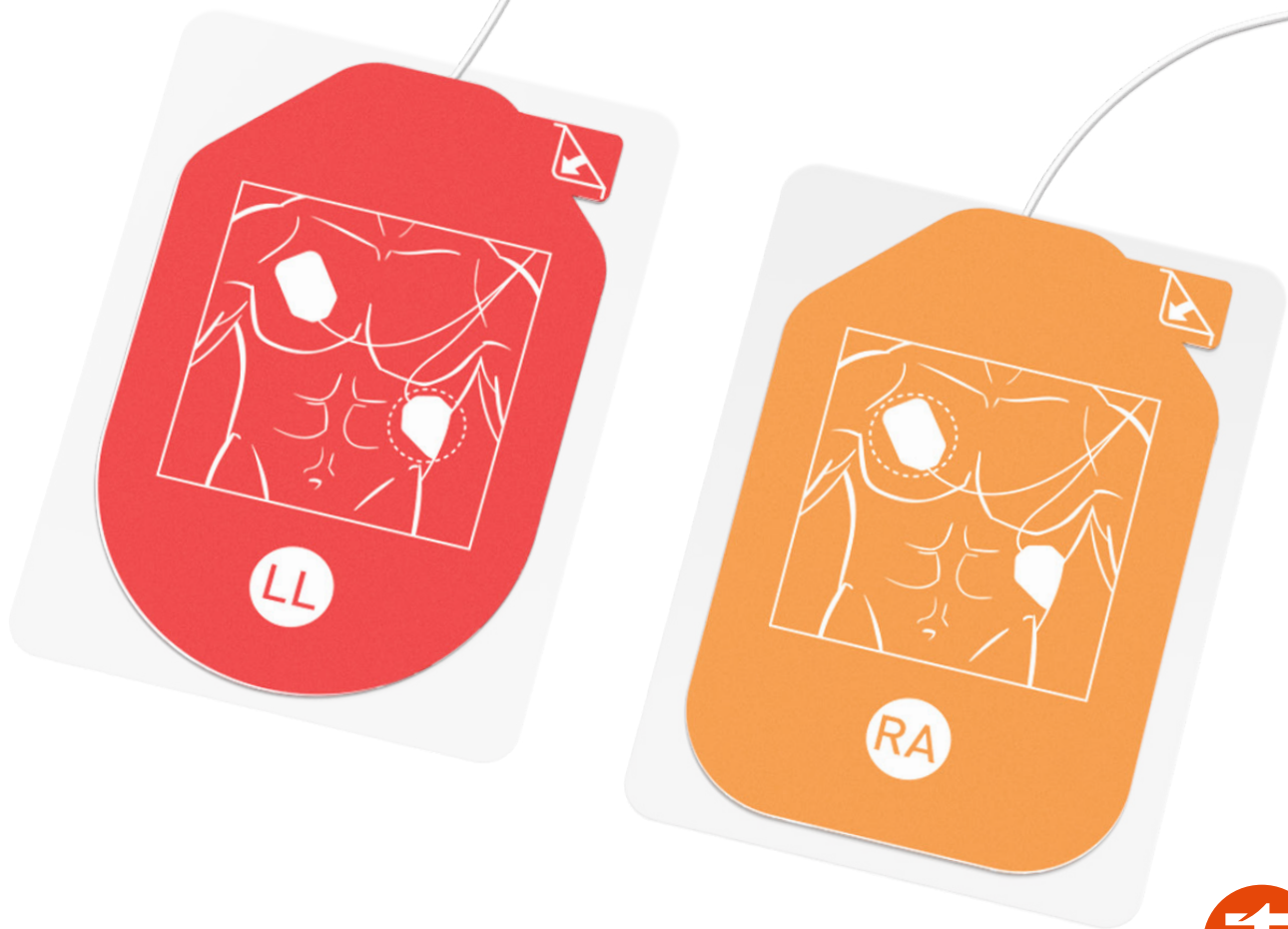


# AED DEFIBRILLATION ELECTRODE PADS

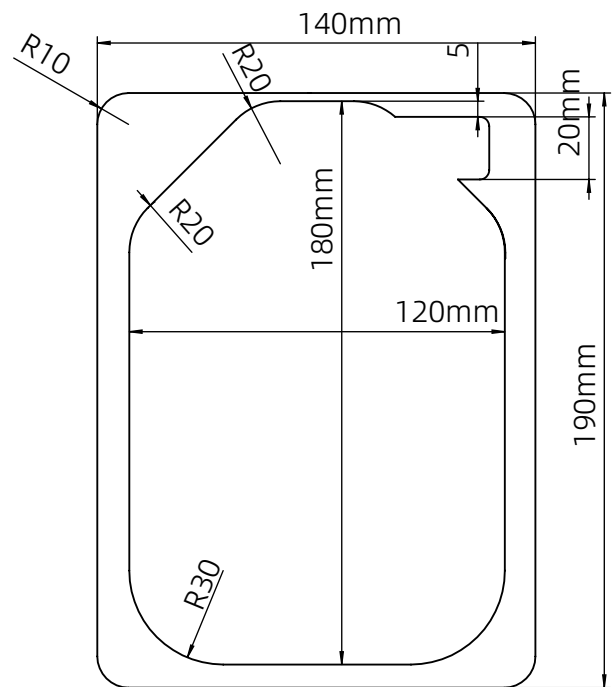
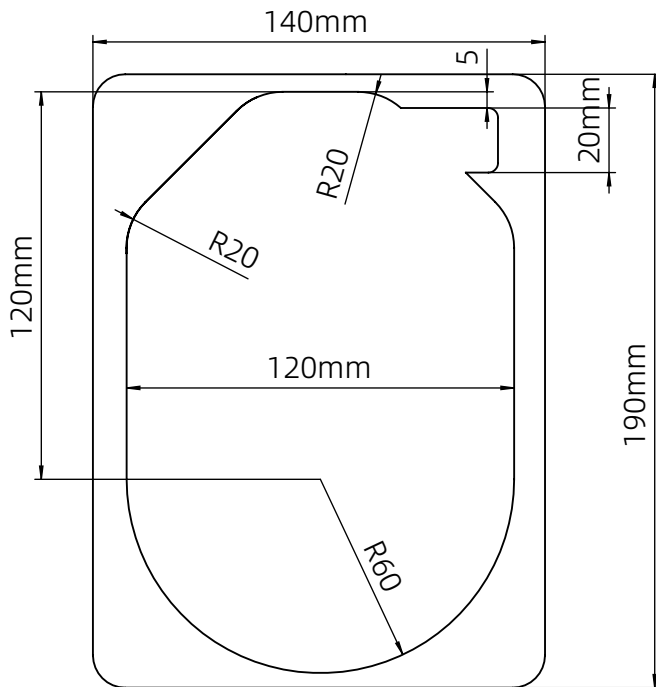


# Product Introduction

The AED defibrillation electrode piece is an electrode piece used in AEDs (Automated External Defibrillators) that can be applied to the chest of a cardiac arrest patient to analyze the heart rhythm and dispense current through the AED if necessary to restore a normal heartbeat.



# Product Dimensions



# Product Specifications

<b>Product Name</b>	Defibrillation electrode pads
<b>Product Model</b>	AEDT-01
<b>Impedance</b>	≤25 Ohm
<b>Wire length</b>	1.2±0.1m
<b>Connector</b>	Adaptation to AED main unit
<b>Product Size</b>	120 mm x 190 mm
<b>Gross weight</b>	100G
<b>Storage Temperature</b>	-20°C~70°C
<b>Working temperature</b>	0°C~45°C
<b>Bag Size</b>	200*130*10mm

# Adapted Plugs

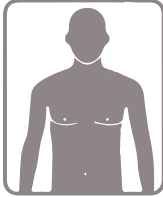
Product Number	Image Plug	Adapters Brand
AED-T01-00		Mindray, Comen, Medtronic, Jousing, Lepu
AED-T01-01		ZOLL
AED-T01-02		ZOLL, M&B
AED-T01-03		Philips
AED-T01-04		GE
AED-T01-05		Mediana

Product Number	Image Plug	Adapters Brand
AED-T01-06		Metrax GmbH
AED-T01-07		TAKEX
AED-T01-08		TAKEX
AED-T01-09		SCHILLER
AED-T01-10		Corpuls
AED-T01-11	For AED training machine Electrodes	Applicable to all brands

 We can provide OEM/ODM customization service according to customers' needs!

## How to use

1



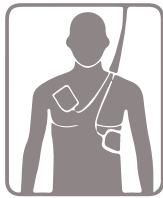
Expose the victim's chest.

2



Open the electrode pads.

3



Attach the pads to the upper right chest and lower left side of the chest.

4



Ensure good access and activate the AED defibrillator.



**Note:** It is important to follow the specific instructions provided by the AED manufacturer and receive proper training in AED usage.

## Cautions

1. Please check the expiration date and integrity of the electrode sheet before use.
2. Do not use in the environment with flammable gas or liquid.
3. Do not place any metal objects or objects that may interfere with the signal on the patient.
4. Do not use in a moving car or in an unstable environment.

### Office

Room2008, 20/F,Block A,China ResourcesBuild-  
ing,1366 Qianjiang Road, Hangzhou P.R.C(310020)  
Tel: +86(575)82912999/82915999  
Fax: +86(575)82670000

### Factory

MaShan Village, Dongguan Street, Shangyu  
City, Zhejiang Province, P.R.CHINA. 312352  
Tel: +86(575)82563666  
Fax: +86(575)82563750